



K8 Trailer Instructions

The club has a new K8 Trailer. It's not perfect but it was cheap and will get the glider back to the club in one piece should the need arise. Here are some instructions for its use.

Before setting off on the retrieve make sure you have the rudder lock, the strap, the bar that holds the fuselage upright, 3 bungee cords and the lighting board.

The trailer does not have overrun brakes, its weight unladen is 320kgs, with glider 535kgs. Consult your cars handbook or manufacturers web site to ensure that this does not exceed the maximum for your car. The unbraked trailer limit for Astra's, Golf's and Focus's is in excess of 600kgs.

1. Place the fuselage backwards on the trailer. First attach the bar to the wing mounting spigots on the fuselage then screw the trailer tie rods into the bar to hold the fuselage upright.



2. Secure the rear of the fuselage by attaching a shackle to stop the fuselage rolling off the back of the trailer and a bungee to keep it down.



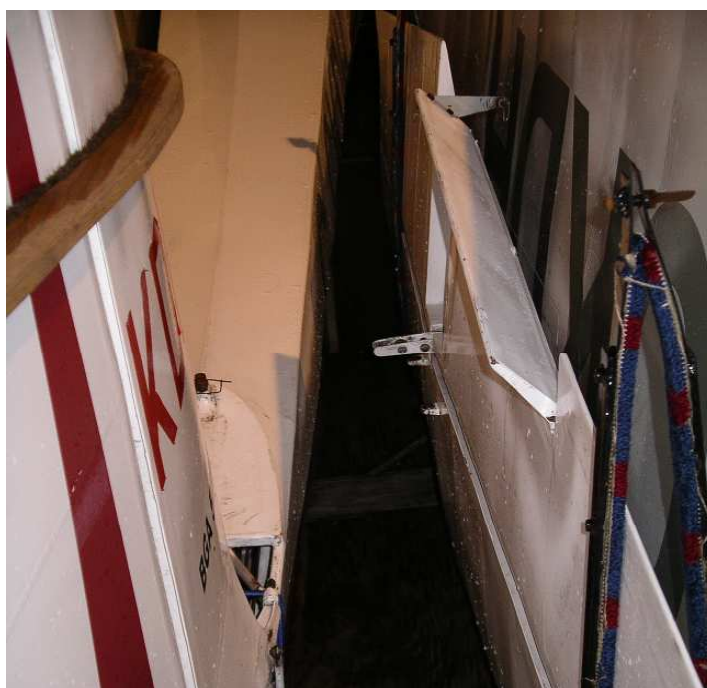
3. Hook the strap to the Tost hook and the rear of the trailer to stop the fuselage rolling off the front the trailer.



4. Fit the rudder lock.



5. Place the tailplane in the holder with the elevator control arm facing in towards the fuselage.



6. Place the wings on with the underside facing in towards the fuselage. Secure the wing roots with the clamps on the trailer. Attach a bungee cord to the air brake bell cranks to keep the brakes closed and another bungee to the aileron bell cranks but this time wrapped around the underside of the spars to stop the ailerons flapping about and ensure that they are held outwards.



**FINALLY, VERY
IMPORTANT THIS...**

**PUT EVERYTHING
AWAY FOR OTHERS TO
USE!!!**